

AGENDA

Ingham County Parks & Recreation Commission
121 E. Maple Street, P.O. Box 178, Mason, MI 48854
Telephone: 517.676.2233; Fax: 517.244.7190

The packet is available on-line by going to pk.ingham.org, choosing the "Park Commission" link and clicking on Monday, September 22 2014

Monday, September 22, 2014

6:00pm

PARKS & RECREATION COMMISSION MEETING

Human Services Building
Conference Room A, Second Floor
5303 S. Cedar Street, Building #3
Lansing, Michigan

1. Call to Order
2. Pledge of Allegiance
3. Approval of Minutes
[Minutes](#) of August 25, 2014 regular meeting will be considered
4. Limited Public Comment ~ *Limited to 3 minutes with no discussion*
5. Late Items / Deletions / Consent Items
6. RETIREMENT TRIBUTE FOR WILLIS BENNETT — STATE REPRESENTATIVE ANDY SCHOR
7. PRESENTATION — MID-MICHIGAN STEWARDSHIP
8. PRESENTATION — DAVE STOKER, COUNTY ATTORNEY
9. PRESENTATION — MIKE NOWLIN, GÜD MARKETING
10. ACTION ITEMS
 - A. [Resolution](#) Authorizing the Transfer of two Parcels of Land to Meridian Township
 - B. [Resolution](#) Accepting a Grant of Easement Over Property Owned by the City of Lansing Located in the City Of Lansing
11. DISCUSSION ITEMS
 - A. Friends of Ingham County Parks Monthly Reports
 - B. [August 2014 Financial Report](#)
 - C. [Lake Lansing Park-North Deer Management Plan Review](#)
 - D. Snowpark Update
12. Director's Report
 - A. Union Contract
 - B. Director's Position Update
 - C. Touch a Truck
13. [Correspondence & Citizen Comment](#)
14. Board Comments

15. Limited Public Comment ~ *Limited to 3 minutes with no discussion*

16. Upcoming Meetings

- A. Date: October 15, 2014; Time 12:00pm
Budget & Personnel Committee Meeting
- Date: October 20, 2014; Time: 6:00pm
Planning & Community Outreach Committee Meeting
- Date: October 27, 2014; Time: 6:00pm
Parks & Recreation Commission Meeting

17. Informational Items – *Distributed at Commission Meeting*

- A. County Services, Finance Committee, and Board of Commissioner Meeting Minutes
(Items pertaining to the Parks Department)
- B. Newspaper Articles
- C. Day Camp Surveys
- D. Shelter Survey Report

18. Adjournment

Official minutes are stored and available for inspection at the address noted at the top of this agenda. The Ingham County Parks & Recreation Commission will provide necessary reasonable auxiliary aids and services, such as interpreters for the hearing impaired and audio tapes of printed materials being considered at the meeting for the visually impaired, for individuals with disabilities a the meeting upon five (5) working days notice to the Ingham County Parks & Recreation Commission. Individuals with disabilities requiring auxiliary aids or services should contact the Ingham County Parks & Recreation Commission by writing to the Ingham County Parks Department, P.O. Box 178, Mason, Michigan 48854, or by calling 517.676.2233.

DRAFT MINUTES OF THE MEETING
INGHAM COUNTY PARKS & RECREATION COMMISSION
121 E. Maple Street, Suite 102, Mason, Michigan 48854
August 25, 2014

The Ingham County Parks & Recreation Commission held a Regularly Scheduled Meeting at the Lakeview Shelter, Lake Lansing Park-South, 1621 Pike Street, Haslett, Michigan

Board Members

Present: John Czarnecki, Ralph Monsma, Paul Pratt, Mike Rice, Commissioner Tsernoglou, and Jonathan Schelke

Absent: Matt Bennett, Chair Nicholls, Kevin Duffy, and Commissioner Koenig

Also Present: Director of Parks Willis Bennett, Park Manager Pat Witte, Recording Secretary Nicole Wallace, and Jay Hawkins

Call to Order: Mr. Czarnecki called the Regularly Scheduled Parks & Recreation Commission meeting to order at 6:23 pm

Minutes: **Moved by** Mr. Monsma and **Supported by** Mr. Rice to approve the July 28, 2014 minutes of the regular meeting as amended. **Yes-6; No-0. MOTION CARRIED.**

Corrections to July 28, 2014 Minutes: On page two, in the fifth paragraph correct member to meeting: The county attorney is not available in August but may be at the September park board ~~member~~ meeting.

Limited Public Comment: Jay Hawkins introduced himself and stated he was at the meeting to listen.

Late Items / Deletions: None.

ACTION ITEMS

Willis Bennett provided background information regarding the resolution to purchase a snow groomer. Willis Bennett stated the Purchasing Department solicited bids and the selected vendor's snow groomer is a brand new machine and has an excellent warranty. The snow groomer is a smaller unit than what we had last year and it will fit in our shop. This will eliminate wasted fuel since the groomer will not take as long to warm up or sit idle.

RESOLUTION #15-14 AUTHORIZING THE PURCHASE OF ONE (1) NEW SNOW GROOMER

WHEREAS, the Ingham County Parks Department built and operates the Snowpark at Hawk Island County Park; and

WHEREAS, due to the termination of the agreement with Superparks, LLC, for the management and maintenance of the Snowpark, Parks Department staff will now manage and maintain the Snowpark; and

WHEREAS, a dedicated snow groomer is necessary to build and maintain the features of the Snowpark; and

WHEREAS, the Ingham County Purchasing Department took sealed bids for snow grooming equipment and upon review of bids received, Purchasing and Parks staff recommends that the bid be awarded to Kassbohrer All Terrain Vehicles, Inc.,

THEREFORE BE IT RESOLVED, the Ingham County Parks and Recreation Commission recommends to the Ingham County Board of Commissioners that one (1) new snow groomer be purchased from Kassbohrer All Terrain Vehicles, Inc. in an amount not to exceed \$185,000.

Moved by Mr. Monsma and **Supported by** Mr. Schelke that Resolution #15-14 be approved.
Yes-6; No-0. MOTION CARRIED.

Willis Bennett provided background information regarding the resolution to purchase two snowmakers. Willis Bennett stated the Purchasing Department solicited bids and park staff already knows how to maintain and run the selected vendor's equipment.

RESOLUTION #16-14 AUTHORIZING THE PURCHASE OF TWO (2) NEW SNOW MAKERS

WHEREAS, the Ingham County Parks Department built and operates the Snowpark at Hawk Island County Park; and

WHEREAS, due to the termination of the agreement with Superparks, LLC, for the management and maintenance of the Snowpark, Parks Department staff will now manage and maintain the Snowpark; and

WHEREAS, dedicated snow makers are necessary to build and maintain the features of the Snowpark; and

WHEREAS, the Ingham County Purchasing Department took sealed bids for snow grooming equipment and upon review of bids received, Purchasing and Parks staff recommends that the bid be awarded to Snow Machines, Inc.

THEREFORE BE IT RESOLVED, the Ingham County Parks and Recreation Commission recommends to the Ingham County Board of Commissioners that two (2) new snow makers be purchased from Snow Machines, Inc. in an amount not to exceed \$39,200.

Moved by Commissioner Tsernoglou and **Supported by** Mr. Pratt that Resolution #16-14 be approved. **Yes-6; No-0. MOTION CARRIED.**

DISCUSSION ITEMS

July 2014 Financial Report ~ Willis Bennett referenced the report in the packet. Mr. Czarnecki stated controllable expenses are in check.

Snowpark Update ~ Willis Bennett stated we are gearing up for the winter season. Equipment will be tested and hiring will start in the next coming weeks. Notice was sent to the contractor that they need to remove their equipment from Hawk Island. If the equipment is not moved it will be put in storage at the contractor's expense.

DIRECTOR'S REPORT

JASP (Friends of the Court) Update~ Willis Bennett stated the program has been canceled since the funding runs out at the end of September.

Cuisine in the Park~ Willis Bennett reported the event was a success. There were 34 items in the silent auction and the food and music were excellent. Willis Bennett stated Touch a Truck is coming up on September 13th at Hawk Island. Commissioner Tsernoglou suggested we promote park events through the Pure Michigan website.

Other~ Willis Bennett stated the Controller's recommended budget had a 12.5% increase for the Parks Department. The increase accounts for the change in the minimum wage (\$15,000), the replacement of permanent wages from 508 (\$46,000), a lower parking revenue projection (\$15,000) and a decrease in Friends donations (\$15,000). The sheriff patrols and maintenance supplies requests were not recommended. Willis Bennett stated we will request those on the "Z"-list.

CORRESPONDENCE & CITIZEN COMMENTS

In reference to the citizen comment about the seagull, Commissioner Tsernoglou recommended animal control or a wildlife agency could have handled this situation.

BOARD COMMENTS

Mr. Monsma said it was a wonderful evening at the Lake Lansing Park-South Bandshell concert the previous Friday. Willis Bennett said there is one more concert of the season. Commissioner Tsernoglou stated Fenner Nature Center has approached the County asking for funding and she suggested they approach the Park Commission about this idea.

LIMITED PUBLIC COMMENT:

None.

Adjournment:

There being no further business, the meeting was adjourned at 6:51 pm.

Meeting adjourned

Minutes submitted by:

Nicole Wallace, Recording Secretary

INGHAM COUNTY PARKS & RECREATION COMMISSION

Meeting of September 22, 2014

RESOLUTION #__-14

RESOLUTION AUTHORIZING THE TRANSFER OF TWO (2) PARCELS OF LAND TO MERIDIAN TOWNSHIP

WHEREAS, Parks Department staff identified two small parcels of land owned by Ingham County that lie within two Meridian Township parks; and

WHEREAS, Meridian Township has requested that the properties be transferred from the County to the Township; and

WHEREAS, the properties have been appropriately maintained by the Township; and

WHEREAS, Park staff recommends that the parcels be transferred to the Township to continue to be used as a public park.

THEREFORE BE IT RESOLVED, the Ingham County Parks & Recreation Commission recommends to the Board of Commissioners that the two parcels identified be transferred to Meridian Township and that any agreement shall contain a restriction which limits the use of the Premises for public park purposes in perpetuity.

CHARTER TOWNSHIP OF MERIDIAN

Elizabeth Ann LeGoff
Brett Dreyfus
Julie Brixie
Frank L. Walsh

Supervisor
Clerk
Treasurer
Manager



Milton L. Scales
Ronald J. Styka
John Veenstra
Angela Wilson

Trustee
Trustee
Trustee
Trustee

August 27, 2014

Victor Celentino
Chairperson, Ingham County Board of Commissioners
P.O. Box 319
Mason, MI 48854

Dear Mr. Celentino:

We have identified two small parcels of land that are owned by Ingham County that lie within two of our Township Parks. One parcel is located in Ferguson Park, along the Red Cedar River, and the other is across Okemos Road within Wonch Park.

Meridian Township has always maintained the parcels as part of our park system and desires to have them legally transferred into Meridian Township. Based on discussions with the Meridian Township Park Commission and Ingham County Parks, there are no objections to this action.

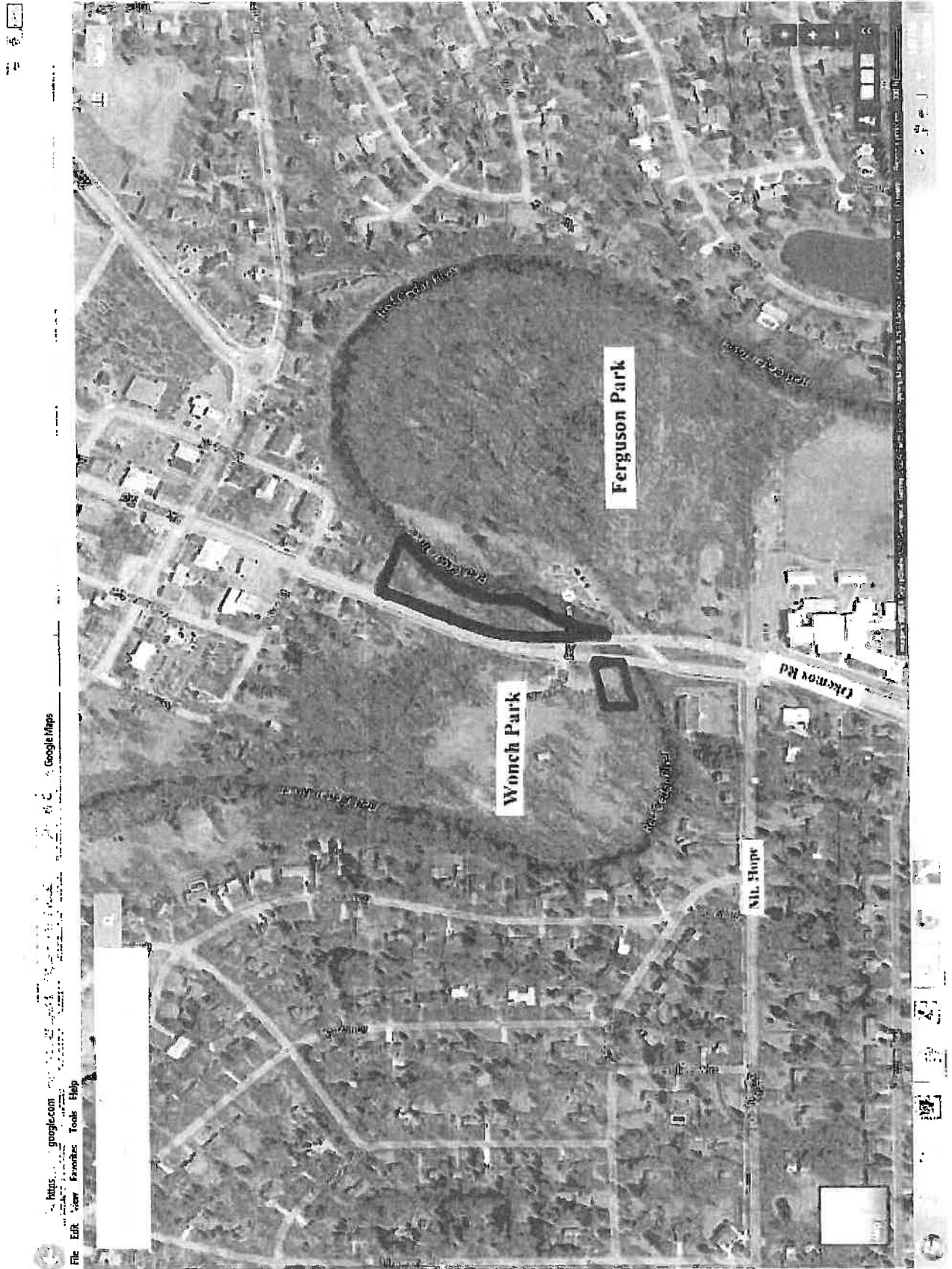
For reference, I have attached an aerial photo of the immediate area and identified the location of the parcels in relationship to our parks and adjacent roads. Also attached are the legal descriptions for the parcels.

Please provide any appropriate information that the Township will need to proceed with the property transfer. Feel free to contact me with any questions.

Sincerely,

LuAnn Maisner
Director of Parks and Recreation

cc: Willis Bennett, Director of Ingham County Parks



INGHAM COUNTY PARKS & RECREATION COMMISSION

Meeting of September 22, 2014

RESOLUTION # -14

RESOLUTION ACCEPTING A GRANT OF EASEMENT OVER PROPERTY OWNED BY THE CITY OF LANSING LOCATED IN THE CITY OF LANSING

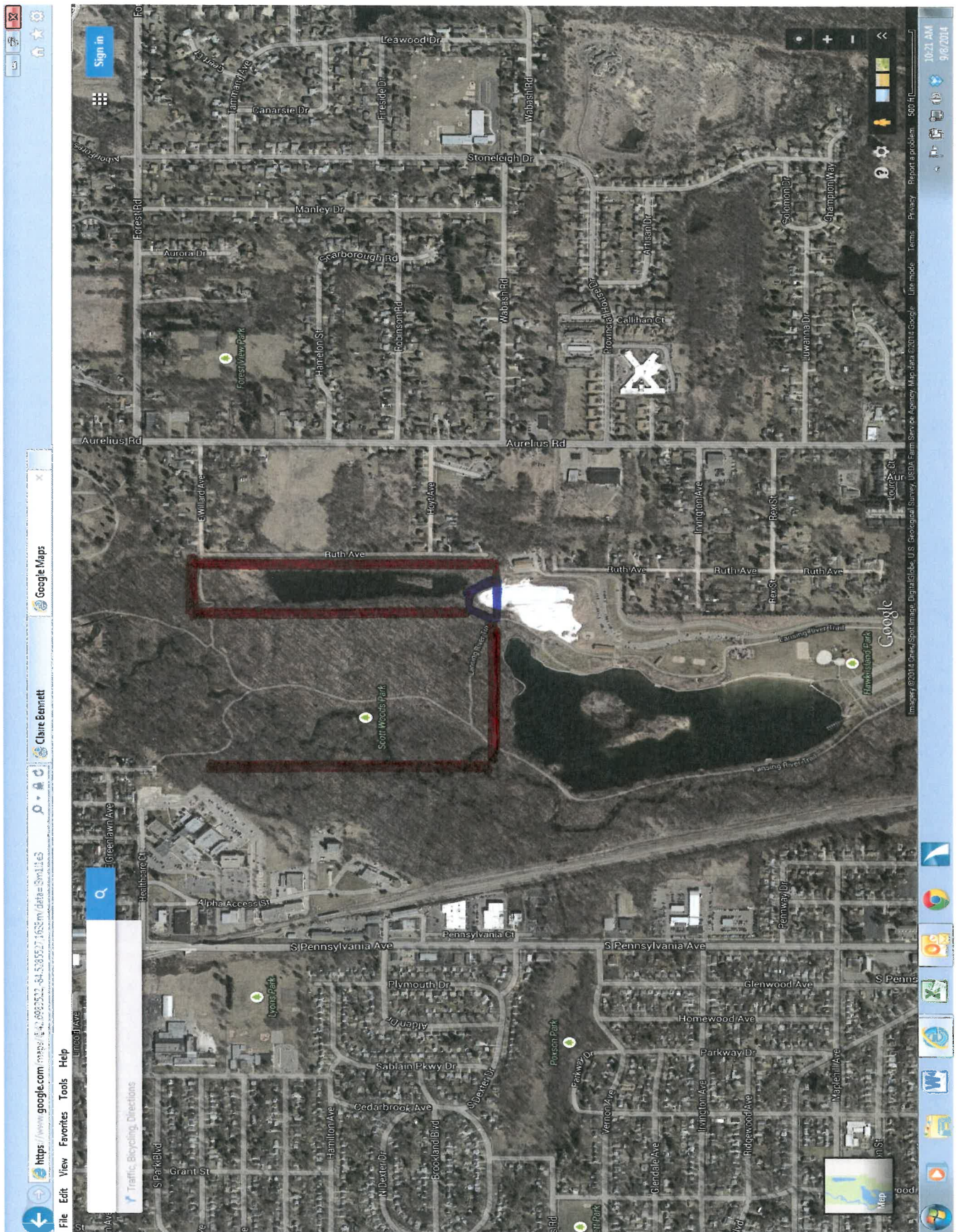
WHEREAS, the Ingham County Parks Department operates the Snowpark at Hawk Island County Park; and

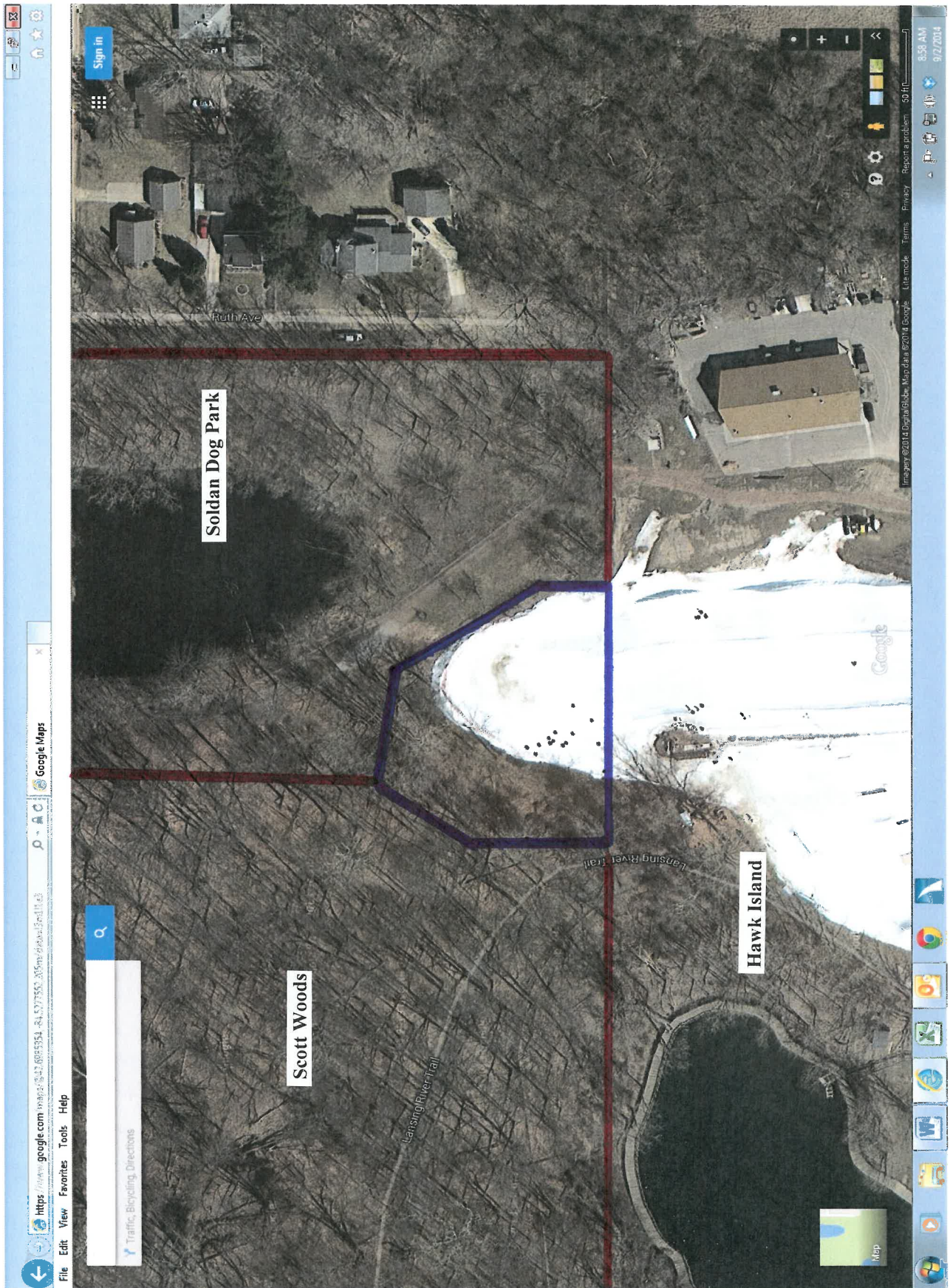
WHEREAS, for user safety and enjoyment, additional area is needed at the end of the tubing runs outside of County property; and

WHEREAS, the City of Lansing is willing to provide an easement for a small section of Scott Woods Park for this purpose.

THEREFORE BE IT RESOLVED, that the Ingham County Parks & Recreation Commission recommends the Ingham County Board of Commissioners accepts the grant of easement over property owned by City of Lansing located in Lansing, Michigan.

BE IT FURTHER RESOLVED, that all documents be subject to the review and approval of the County Attorney.





Ingham County Parks Department

Financial Report

August 31, 2014



2014 - 208 Operating Budget Report

as of August 31, 2014	Original Budget	Revised Budget 2014	YTD Total	Admin	Burch	Lk Lan	Hawk Is
REVENUE							
Special Event Fees	3,500	-	1,050	1,050	-	-	-
Parking Fees	308,000	290,000	283,394	-	43,378	73,962	166,054
Donations / Friends	20,000	10,000					
Passport Fees	14,000	15,000	10,749	10,749	-	-	-
Misc Revenue	5,856	5,856	1,766	1,766	-	-	-
Capital Improvement trs in	0	6,800	5,100	5,100			
Revenue Trf In - F-101	1,445,577	1,445,577	1,081,183	1,081,183	-	-	-
TOTAL REVENUE	1,796,933	1,773,233	1,383,242	1,099,848	43,378	73,962	166,054
PERSONNEL SERVICES							
Salaries & Wages Perm	639,154	639,154	430,386	430,386	-	-	-
Salaries & Wages Seasonal	267,387	239,652	176,254	10,476	38,214	61,353	66,211
Overtime Permanent	1,687	4,000	3,613	3,613	-	-	-
Overtime Seasonals	4,783	700	1,324	-	0	40	1,284
FICA County Share	49,503	55,851	45,657	32,812	2,923	4,742	5,180
Meeting Fees	14,000	10,000	-	-	0	0	0
Fringe Benefits	342,872	342,472	219,495	214,473	1,107	0	0
TOTAL PERSONNEL SERVICES	1,319,386	1,291,829	876,729	691,760	42244	66135	72675
CONTROLLABLE EXPENSES							
Office/Printing/Postage/Copying	17,980	15,150	6,505	5,868	58	100	480
Non-Cap Equipment	4,900	3,750	1,528	-626	152	319	1,683
Controlled Capital Items	-	6,800	-	-	-	-	-
Maintenance Supplies	71,500	75,000	54,310	43	12,406	16,348	25,513
Other Supplies	21,111	23,648	13,419	552	5,087	4,043	3,737
Small Tools	1,500	1,500	793	0	54	0	739
Uniforms/Cleaning/Clothing	6,100	6,100	4,300	4,300	-	-	-
Gas-Grease-Oil	57,600	48,000	32,265	0	32,265	-	-
Med Services - Physicals	1,000	1,000	-	-	-	-	-
Memberships/Subscriptions/Adver	2,700	2,390	2,218	2,218	-	-	-
Contractual Services / Consultants	6,260	11,100	2,976	1,757	70	70	1,079
Travel - Local / Training	3,100	3,850	1,359	437	-	184	-
Telephone	7,484	7,484	4,667	3,870	270	327	200
Maintenance Contractual	19,900	19,800	8,572	1,048	3,677	1,546	2,301
Equipmnet Repair/Maint	30,400	30,400	22,265	1,443	10,317	3,531	6,974
Equipment Rental	3,038	3,038	1,387	-	225	817	345
TOTAL CONTROLLABLE EXPENSES	254,773	259,010	156,563	20,910	64,580	27,285	43,050
NON-CONTROLLABLE EXPENSE							
Insurance	29,341	30,056	10,821	10,671	42	76	32
Utilities	57,916	61,141	40,018	6,110	6,724	7,770	19,414
Courier Service	1,576	1,576	1183	1183	-	-	-
Telephone Allocation Costs	3,247	3,247	1748	1748	-	-	-
MIS Support	84,089	84,269	69,258	69,258	-	-	-
Vehicle Service Charge	46,605	46,605	9,778	9,778	-	-	-
TOTAL NON-CONTROLLABLE EXPENSES	222,774	226,894	132,806	98,748	6,766	7,846	19,446
TOTAL OPERATING REVENUE	1,796,933	1,773,233	1,383,242				
TOTAL EXPENSES	1,796,933	1,777,733	1,166,098				
			217,144				

Monthly Revenue Report																
		2013	2014	2013	2014	2013	2014	2013	2014	2013	2014	2013	2014	2013	2014	
		Burch	Burch	LLS	LLS	LLN	LLN	Parking	Parking	Parking	Parking	Hawk Is	Hawk Is	Parking	Parking	
		Parking	Parking	Parking	Parking	Parking	Parking									TOTAL
Revenue YTD Date	Jan	3,047	4,702	904	-	-	-	-	-	24,525	11,673	28,476	16,375	28,476	16,375	
	Feb	3,969	4,000	-	-	-	-	-	-	5,052	8,242	9,021	12,242	9,021	12,242	
	Mar	707	1,460	-	-	-	-	-	-	4,362	5,933	5,069	7,393	5,069	7,393	
	Apr	1,201	4,897	90	129	45	323	11,259	25,924	12,595	31,273	12,595	31,273	12,595	31,273	
Expenditures	May	4,100	5,830	6,787	12,343	6,728	5,264	27,147	21,919	44,762	45,356	44,762	45,356	44,762	45,356	
	Jun	8,296	9,263	5,337	16,087	1,702	4,519	31,231	39,389	46,566	69,258	46,566	69,258	46,566	69,258	
	Jul	9,339	6,064	25,669	16,355	4,559	2,960	27,509	31,594	67,076	56,973	67,076	56,973	67,076	56,973	
	Aug	8,513	7,162	10,299	13,698	2,817	2,284	30,627	21,380	52,256	44,524	52,256	44,524	52,256	44,524	
Total Revenue	Sep	2,385	-	4,785	-	957	-	9,298	-	17,425	-	17,425	-	17,425	-	
	Oct	2,663	-	1,643	-	2,253	-	2,761	-	9,320	-	9,320	-	9,320	-	
	Nov	-	-	-	-	-	-	-	-	-	-	-	-	-	-	
	Dec	-	-	-	-	-	-	-	-	-	-	-	-	-	-	
YTD Balance	YTD	44,220	43,378	55,514	58,612	19,061	15,350	173,771	166,054	292,566	283,394	292,566	283,394	292,566	283,394	

208 Fund - Parking Revenue and Expenses - YTD				Hardship Passes			
August 31, 2014				2011 \$292,566 1,215			
				2012 \$302,644 1,332			
				2013 \$292,533 1,527			
				2014 YTD \$283,394			

208 Fund - Parking Revenue and Expenses - YTD				Hardship Passes			
August 31, 2014				2011 \$292,566 1,215			
				2012 \$302,644 1,332			
				2013 \$292,533 1,527			
				2014 YTD \$283,394			

208 Fund - Parking Revenue and Expenses - YTD				Hardship Passes			
August 31, 2014				2011 \$292,566 1,215			
				2012 \$302,644 1,332			
				2013 \$292,533 1,527			
				2014 YTD \$283,394			

208 Fund - Parking Revenue and Expenses - YTD				Hardship Passes			
August 31, 2014				2011 \$292,566 1,215			
				2012 \$302,644 1,332			
				2013 \$292,533 1,527			
				2014 YTD \$283,394			

208 Fund - Parking Revenue and Expenses - YTD				Hardship Passes			
August 31, 2014				2011 \$292,566 1,215			
				2012 \$302,644 1,332			
				2013 \$292,533 1,527			
				2014 YTD \$283,394			

208 Fund - Parking Revenue and Expenses - YTD				Hardship Passes			
August 31, 2014				2011 \$292,566 1,215			
				2012 \$302,644 1,332			
				2013 \$292,533 1,527			
				2014 YTD \$283,394			

208 Fund - Parking Revenue and Expenses - YTD				Hardship Passes			
August 31, 2014				2011 \$292,566 1,215			
				2012 \$302,644 1,332			
				2013 \$292,533 1,527			
				2014 YTD \$283,394			

208 Fund - Parking Revenue and Expenses - YTD				Hardship Passes			
August 31, 2014				2011 \$292,566 1,215			
				2012 \$302,644 1,332			
				2013 \$292,533 1,527			
				2014 YTD \$283,394			

208 Fund - Parking Revenue and Expenses - YTD				Hardship Passes			
August 31, 2014				2011 \$292,566 1,215			
				2012 \$302,644 1,332			
				2013 \$292,533 1,527			
				2014 YTD \$283,394			

208 Fund - Parking Revenue and Expenses - YTD				Hardship Passes			
August 31, 2014				2011 \$292,566 1,215			
				2012 \$302,644 1,332			
				2013 \$292,533 1,527			
				2014 YTD \$283,394			

208 Fund - Parking Revenue and Expenses - YTD				Hardship Passes			
August 31, 2014				2011 \$292,566 1,215			
				2012 \$302,644 1,332			
				2013 \$292,533 1,527			
				2014 YTD \$283,394			

208 Fund - Parking Revenue and Expenses - YTD				Hardship Passes			
August 31, 2014				2011 \$292,566 1,215			
				2012 \$302,644 1,332			
				2013 \$292,533 1,527			
				2014 YTD \$283,394			

208 Fund - Parking Revenue and Expenses - YTD				Hardship Passes			
August 31, 2014				2011 \$292,566 1,215			
				2012 \$302,644 1,332			
				2013 \$292,533 1,527			
				2014 YTD \$283,394			

208 Fund - Parking Revenue and Expenses - YTD				Hardship Passes			
August 31, 2014				2011 \$292,566 1,215			
				2012 \$302,644 1,332			
				2013 \$292,533 1,527			
				2014 YTD \$283,394			

208 Fund - Parking Revenue and Expenses - YTD				Hardship Passes			
August 31, 2014				2011 \$292,566 1,215			
				2012 \$302,644 1,332			
				2013 \$292,533 1,527			
				2014 YTD \$283,394			

208 Fund - Parking Revenue and Expenses - YTD				Hardship Passes			
August 31, 2014				2011 \$292,566 1,215			
				2012 \$302,644 1,332			
				2013 \$292,533 1,527			
				2014 YTD \$283,394			

208 Fund - Parking Revenue and Expenses - YTD				Hardship Passes			
August 31, 2014				2011 \$292,566 1,215			
				2012 \$302,644 1,332			
				2013 \$292,533 1,527			
				2014 YTD \$283,394			

208 Fund - Parking Revenue and Expenses - YTD				Hardship Passes			
August 31, 2014				2011 \$292,566 1,215			
				2012 \$302,644 1,332			
				2013 \$292,533 1,527			
				2014 YTD \$283,394			

208 Fund - Parking Revenue and Expenses - YTD				Hardship Passes			
August 31, 2014				2011 \$292,566 1,215			
				2012 \$302,644 1,332			
				2013 \$292,533 1,527			
				2014 YTD \$283,394			

208 Fund - Parking Revenue and Expenses - YTD				Hardship Passes			
August 31, 2014				2011 \$292,566 1,215			
				2012 \$302,644 1,332			
				2013 \$292,533 1,527			
				2014 YTD \$283,394			

208 Fund - Parking Revenue and Expenses - YTD				Hardship Passes			
August 31, 2014				2011 \$292,566 1,215			
				2012 \$302,644 1,332			
				2013 \$292,533 1,527			
				2014 YTD \$283,394			

208 Fund - Parking Revenue and Expenses - YTD				Hardship Passes			
August 31, 2014				2011 \$292,566 1,215			
				2012 \$302,644 1,332			
				2013 \$292,533 1,527			
				2014 YTD \$283,394			

208 Fund - Parking Revenue and Expenses - YTD				Hardship Passes			
August 31, 2014				2011 \$292,566 1,215			
				2012 \$302,644 1,332			
				2013 \$292,533 1,527			
				2014 YTD \$283,394			

208 Fund - Parking Revenue and Expenses - YTD				Hardship Passes			
August 31, 2014				2011 \$292,566 1,215			
				2012 \$302,644 1,332			
				2013 \$292,533 1,527			
				2014 YTD \$283,394			

208 Fund - Parking Revenue and Expenses - YTD				Hardship Passes			
August 31, 2014				2011 \$292,566 1,215			
				2012 \$302,644 1,332			
				2013 \$292,533 1,527			
				2014 YTD \$283,394			

208 Fund - Parking Revenue and Expenses - YTD				Hardship Passes			
August 31, 2014				2011 \$292,566 1,215			
				2012 \$302,644 1,332			
				2013 \$292,533 1,527			
				2014 YTD \$283,394			

208 Fund - Parking Revenue and Expenses - YTD				Hardship Passes			
August 31, 2014				2011 \$292,566 1,215			
				2012 \$302,644 1,332			
				2013 \$292,533 1,527			
				2014 YTD \$283,394			

208 Fund - Parking Revenue and Expenses - YTD				Hardship Passes			
August 31, 2014				2011 \$292,566 1,215			
				2012 \$302,644 1,332			
				2013 \$292,533 1,527			
				2014 YTD \$283,394			

208 Fund - Parking Revenue and Expenses - YTD				Hardship Passes			
August 31, 2014				2011 \$292,566 1,215			
				2012 \$302,644 1,332			
				2013 \$292,533 1,527			
				2014 YTD \$283,394			

208 Fund - Parking Revenue and Expenses - YTD				Hardship Passes			
August 31, 2014				2011 \$292,566 1,215			
				2012 \$302,644 1,332			
				2013 \$292,533 1,527			
				2014 YTD \$283,394			

208 Fund - Parking Revenue and Expenses - YTD				Hardship Passes			
August 31, 2014				2011 \$292,566 1,215			
				2012 \$302,644 1,332			
				2013 \$292,533 1,527			
				2014 YTD \$283,394			

208 Fund - Parking Revenue and Expenses - YTD				Hardship Passes			
August 31, 2014				2011 \$292,566 1,215			
				2012 \$302,644 1,332			
				2013 \$292,533 1,527			
				2014 YTD \$283,394			

208 Fund - Parking Revenue and Expenses - YTD				Hardship Passes			
August 31, 2014				2011 \$292,566 1,215			
				2012 \$302,644 1,332			
				2013 \$292,533 1,527			
				2014 YTD \$283,394			

208 Fund - Parking Revenue and Expenses - YTD				Hardship Passes			
August 31, 2014				2011 \$292,566 1,215			
				2012 \$302,644 1,332			
				2013 \$292,533 1,527			
				2014 YTD \$283,394			

208 Fund - Parking Revenue and Expenses - YTD				Hardship Passes			
August 31, 2014				2011 \$292,566 1,215			
				2012 \$302,644 1,332			
				2013 \$292,533 1,527			
				2014 YTD \$283,394			

208 Fund - Parking Revenue and Expenses - YTD				Hardship Passes			
August 31, 2014				2011 \$292,566 1,215			
				2012 \$302,644 1,332			
				2013 \$292,533 1,527			
				2014 YTD \$283,394			

208 Fund - Parking Revenue and Expenses - YTD				Hardship Passes			
August 31, 2014				2011 \$292,566 1,215			
				2012 \$302,644 1,332			
				2013 \$292,533 1,527			
				2014 YTD \$283,394			

208 Fund - Parking Revenue and Expenses - YTD				Hardship Passes			
August 31, 2014				2011 \$292,566 1,215			
				2012 \$302,644 1,332			
				2013 \$292,533 1,527			
				2014 YTD \$283,394			

208 Fund - Parking Revenue and Expenses - YTD				Hardship Passes			
August 31, 2014				2011 \$292,566 1,215			
				2012 \$302,644 1,332			
				2013 \$292,533 1,527			
				2014 YTD \$283,394			

208 Fund - Parking Revenue and Expenses - YTD				Hardship Passes			
August 31, 2014				2011 \$292,566 1,215			
				2012 \$302,644 1,332			
				2013 \$292,533 1,527			
				2014 YTD \$283,394			

208 Fund - Parking Revenue and Expenses - YTD				Hardship Passes			
August 31, 2014				2011 \$292,566 1,215			
				2012 \$302,644 1,332			
				2013 \$292,533 1,527			
				2014 YTD \$283,394			

208 Fund - Parking Revenue and Expenses - YTD				Hardship Passes			
August 31, 2014				2011 \$292,566 1,215			
				2012 \$302,644 1,332			
				2013 \$292,533 1,527			
				2014 YTD \$283,394			

208 Fund - Parking Revenue and Expenses - YTD				Hardship Passes			
August 31, 2014				2011 \$292,566 1,215			
				2012 \$302,644 1,332			
				2013 \$292,533 1,527			
				2014 YTD \$283,394			

208 Fund - Parking Revenue and Expenses - YTD				Hardship Passes			
August 31, 2014				2011 \$292,566 1,215			
				2012 \$302,644 1,332			
				2013 \$292,533 1,527			
				2014 YTD \$283,394			

208 Fund - Parking Revenue and Expenses - YTD				Hardship Passes			
August 31, 2014				2011 \$292,566 1,215			
				2012 \$302,644 1,332			
				2013 \$292,533 1,527			
				2014 YTD \$283,394			

208 Fund - Parking Revenue and Expenses - YTD				Hardship Passes			
August 31, 2014				2011 \$292,566 1,215			
				2012 \$302,644 1,332			
				2013 \$292,533 1,527			
				2014 YTD \$283,394			

208 Fund - Parking Revenue and Expenses - YTD				Hardship Passes			
August 31, 2014				2011 \$292,566 1,215			
				2012 \$302,644 1,332			
				2013 \$292,533 1,527			
				2014 YTD \$283,394			

208 Fund - Parking Revenue and Expenses - YTD				Hardship Passes			
August 31, 2014				2011 \$292,566 1,215			
				2012 \$302,644 1,332			
				2013 \$292,533 1,527			
				2014 YTD \$283,394			

208 Fund - Parking Revenue and Expenses - YTD				Hardship Passes			
August 31, 2014				2011 \$292,566 1,215			
				2012 \$302,644 1,332			
				2013 \$292,533 1,527			
				2014 YTD \$283,394			

208 Fund - Parking Revenue and Expenses - YTD				Hardship Passes			
August 31, 2014				2011 \$292,566 1,215			
				2012 \$302,644 1,332			
				2013 \$292,533 1,527			
				2014 YTD \$283,394			

208 Fund - Parking Revenue and Expenses - YTD				Hardship Passes			
August 31, 2014				2011 \$292,566 1,215			
				2012 \$302,644 1,332			
				2013 \$292,533 1,527			
				201			

508- ENTERPRISE FUND
CONSOLIDATED MONTHLY BUDGET UPDATE BY PARK

August 31, 2014	2014 Budget	Actual All YTD	HI BUDGET	HI ACTUAL	BUR BUDGET	BUR ACTUAL	LL BUDGET	LL ACTUAL
REVENUE								
600000 SHELTER FEES	57,900	57,170	23,130	22,570	15,060	15,860	19,710	18,740
671170 CABANA	4,000	3,300	4,000	3,300				
600100 DISC GOLF FEES	21,000	22,781	0		21,000	22,781	0	
610000 BOAT RENTAL	58,969	59,605	10,599	13,330	40,000	39,259	8,370	7,016
620000 BOAT LAUNCH FEES	16,000	15,484	0		0		16,000	15,484
630000 SKI RENTAL	11,500	11,368	0		11,500	11,368	0	
641000 FOOD CONCESSIONS	39,000	47,491	25,606	27,828	3,394	4,136	10,000	15,527
641200 BAIT/TACKLE REVENUE	150	51	100	35	50	16	0	
650000 LL HOUSE	9,900	7,590	0		0		9,900	7,590
652100 ADMISSION FEES - Snow Park	20,000	15,075	20,000	15,075				
669130 INFLATABLE RENTALS	1,000	1,175	0		0		1,000	1,175
669140 SNOW TUBE RENTAL	4,000	4,894	0	923	4,000	3,971	0	
669141 DOG PARK REVENUE	9,000	7,757	9,000	7,757	0		0	
671000 DAY CAMP	15,000	13,097	0		15,000	13,097	0	
671150 VENDING MACHINE COMMISSIONS		36		36				
688220 MISC REVENUE	350	-	350					
698010 CARRY OVER SURPLUS USED	14,710	14,710	3,331	3,331	3,325	3,325	8,054	8,054
TOTAL REVENUE	282,479	281,583	96,116	94,185	113,329	113,813	73,034	73,586
PERSONNEL SERVICES								
705000 SALARIES & WAGES- TEMP	129,685	121,918	52,685	55,846	43,000	39,012	34,000	27,060
TOTAL PERSONNEL SERVICES	129,685	121,918	52,685	55,846	43,000	39,012	34,000	27,060
CONTROLLABLE EXPENSES								
728000 PRINTING AND BINDING	2,099	2,432	999	164	800	1,613	300	655
735100 CONTROLLED CAP - OTHER		6,656		3,331	3,325	3,325		
740000 MAINTENANCE SUPPLIES	19,295	11,895	11,695	8,118	3,800	3,471	3,800	306
743000 OTHER SUPPLIES	28,040	19,002	16,000	10,506	4,000	2,197	8,040	6,299
818000 CONTRACTUAL SERVICES	5,000	5,000	-				5,000	5,000
921050 TELEPHONE	800	-	800		-		-	
931100 MAINT-RELATED CONTRACTUAL	1,000	559	1,000	559	-		-	
932000 EQUIPMENT REPAIR & MAINT	9,554	8,054	500		500		8,554	8,054
942000 EQUIPMENT RENTAL	100	-	100		-		-	
957120 SALES/USE TAX	2,250	1,294	1,425	723	200	234	625	337
INTERNAL ADMIN DISTRIBUTION	64,000	47,992	24,000	16,805	23,000	17,535	17,000	13,652
TOTAL CONTROLLABLE EXPENSE	132,138	102,884	56,519	40,206	35,625	28,375	43,319	34,303
NON-CONTROLLABLE EXPENSES								
915050 INSURANCE/LIABILITY		33		13		15		5
921000 UTILITIES	10,000	8,137	10,000	8,045			-	92
TOTAL NON-CONTROLLABLE EXPENSES	10,000	8,170	10,000	8,045		15	-	92
TOTAL OPERATING REVENUE	282,479	281,583	96,116	94,185	113,329	113,813	73,034	73,586
TOTAL OPERATING EXPENSES	271,823	232,972	119,204	104,096	78,625	67,402	77,319	61,455
CHANGE IN FUND BALANCE - OPERATIONS				(9,911)		46,411		12,131

REVENUE	282,479	281,583
EXPENSE - OPERATIONS	271,823	232,972
NET CHANGE - FUND OVERALL	10,656	48,612

**508 Enterprise Fund
Report as of August 31, 2014**

	LLN Shelter	Boat Launch	Burch Shelter	Burch Can/Boat	Burch Food	Burch Disc Golf	Burch Golf Camp	Burch Ski	LLS Shelter	LLS Boat	LLS Food	LLS House	Hawk Is Shelter	Hawk Is Boat	Hawk Is Food	Hawk Snow Park	Dog Park	TOTAL
Shelter	8,140		15,860						10,600	7,016			22,570	13,329				57,170
Boat/Canoe Rental				39,259														59,604
Boat Launch		15,484																15,484
Ski Rental								11,368										11,368
Misc Revenue/St. Grant					4,135						15,527				26,302	1,526		0
Food Concessions					16							7,590			35			47,490
Bait/Tackle																		51
House Rental																		7,590
Soccer - field usage																		0
Interest Revenue																		0
Inflatable Rental									1,175									1,175
Burch Snow Tube Rental																		0
Day Camp																		13,097
Vending							13,097						36					36
Cabana												3,300						3,300
Dog Park																	7,757	7,757
Snow Park Admission						22,781										15,075		22,781
Hawk Equipment																924		15,075
Carry Over Surplus								3,971										4,895
Revenue to Date	8,140	15,484	15,860	39,259	4,151	22,781	13,097	15,339	11,775	7,016	15,527	7,590	25,906	13,329	26,337	17,525	7,757	281,583
Expenditures																		
Personnel - seasonal	2,812	6,325	3,837	8,992	6,827	3,343	9,186	6,827	5,097	5,447	6,852	527	12,251	9,874	10,378	23,344		121,918
Controllable Expenses	83	5,462	107	5,516	1,722	1,562	960	972	92	362	6,472	126	63	516	10,270	5,943	3,227	43,456
Admin Expenses	3,267	1,294	5,741	4,112	1,294	1,294	3,799	1,294	5,208	1,294	1,294	1,294	8,496	1,294	1,294	4,426	1,294	47,992
Capital Improvement		8,054													3,331			
Non-Controllable (ins/utilit	0	1	2	9	0	4			1	1	1	92	3	3	3	7,503		7,623
Expenditures to Date	6,162	21,136	9,687	18,629	9,843	6,203	13,945	9,094	10,398	7,104	14,619	2,040	20,813	11,686	25,276	41,216	4,521	232,972
Total Revenue	8,140	15,484	15,860	39,259	4,151	22,781	13,097	15,339	11,775	7,016	15,527	7,590	25,906	13,329	26,337	17,525	7,757	281,583
Expenditures to Date	6,162	21,136	9,687	18,629	9,843	6,203	13,945	9,094	10,398	7,104	14,619	2,040	20,813	11,686	25,276	41,216	4,521	232,972
YTD Balance	1,978	(5,652)	6,173	20,630	(5,692)	16,578	(848)	6,245	1,377	(88)	908	5,550	5,093	1,643	1,061	(23,691)	3,236	48,610

YTD Balance from Operations 48,610

Fund Balance from 2013 66,514

Current Available Funds 115,124

* The audited year end 2008 operating statement reflects our fund balance as \$257,788

* The audited year end 2009 operating statement reflects our fund balance as \$206,405

* The audited year end 2010 operating statement reflects our fund balance as \$196,872

* The audited year end 2011 operating statement reflects our fund balance as \$85,150

* The audited year end 2012 operating statement reflects our fund balance as \$78,719

**508 ACTIVITIES
REVENUE COMPARISON
as of August 31, 2014**

	PEDAL BOAT/CANOE				LAUNCH				FOOD				SKI				DAY CAMP				DOG PARK				DISC GOLF			
	LL BOAT 75951	BUR BOAT 75931	HAWK IS 75971		LK LAN 75925	BURCHFIELD 75932	LLS 75952		HAWK IS 75975	BURCHFIELD 75938			BURCHFIELD 75935				FOBS 75984							BURCHFIELD 75934				
	2013	2014	2013	2014	2013	2014	2013	2014	2013	2014	2013	2014	2013	2014	2013	2014	2013	2014	2013	2014	2013	2014	2013	2014				
Jan	0	0	0	0	0	0	1,131	1,526	0	407	0	407	0	3,305	0	3,305	0	775	110	1,033	420	0	0					
Jan - YTD	0	0	0	0	0	0	1,131	1,526	0	407	0	407	0	3,305	0	3,305	0	775	110	1,033	420	0	0					
Feb	0	0	0	0	0	50	1,754	1,398	0	344	0	344	0	3,347	5,954	0	0	215	247	92	136	0	0					
Feb - YTD	0	0	0	0	0	50	2,895	2,924	0	751	0	751	0	3,347	9,259	0	0	990	357	1,125	556	0	0					
March	0	0	0	0	0	0	299	424	0	368	0	368	0	104	2,109	1,230	90	520	410	336	744	0	0					
Mar - YTD	0	0	0	0	0	50	3,184	3,348	0	1,119	0	1,119	0	3,451	11,368	1,230	90	1,510	767	1,461	1,300	0	0					
April	0	0	0	332	0	25	48	151	0	45	1,526	0	0	2,996	3,020	285	1,315	2,464	6,639	7,939	0	0						
Apr - YTD	0	0	0	332	0	25	50	3,499	0	1,163	1,526	3,451	11,368	4,226	3,110	1,795	2,082	3,924	7,939	0	0	0	0					
May	415	799	743	3,576	358	1,259	3,609	3,745	39	48	217	1,455	351	1,910	0	0	4,380	5,098	2,455	1,090	3,580	4,726	0					
May - YTD	415	799	743	3,908	358	1,259	3,634	3,795	3,271	3,546	217	1,455	1,514	3,436	3,451	11,368	8,606	8,208	4,250	3,172	7,504	12,665	0					
June	818	2,244	7,751	8,677	3,114	4,784	1,565	4,730	15	107	965	4,507	7,717	9,298	0	0	6,847	3,282	1,115	1,500	3,541	4,328	0					
Jun - YTD	1,233	3,043	8,494	12,585	3,472	6,043	5,199	8,525	3,286	3,653	1,182	5,961	9,232	12,734	3,451	11,368	15,453	11,490	5,365	4,672	11,045	16,993	0					
July	4,226	2,081	13,272	15,205	2,879	4,238	7,063	4,059	107	302	6,873	5,515	7,778	9,534	0	0	1,085	1,217	1,500	1,640	2,827	2,533	0					
Jul - YTD	5,459	5,124	21,766	27,790	6,351	10,281	12,262	12,584	3,393	3,955	8,055	11,476	17,010	22,268	3,451	11,368	16,538	12,707	6,865	6,312	13,872	19,526	0					
Aug	2,240	1,892	12,516	11,489	3,490	3,049	2,746	2,900	0	181	2,521	4,051	6,760	5,560	0	0	285	390	2,049	1,445	2,223	3,255	0					
Aug - YTD	7,699	7,016	34,282	39,259	9,841	13,330	15,008	15,484	3,393	4,136	10,576	15,528	23,770	27,828	3,451	11,368	16,823	13,097	8,914	7,757	16,095	22,781	0					
Sept	671	0	5,223	0	758	0	529	0	0	0	173	0	1,846	0	0	0	0	0	956	0	1,356	0	0					
Sept - YTD	8,370	7,016	39,505	39,259	10,599	13,330	15,537	15,484	3,393	4,136	10,749	15,528	25,616	27,828	3,451	11,368	16,823	13,097	9,870	7,757	17,451	22,781	0					
Oct	0	0	805	0	0	0	0	0	0	0	0	0	0	0	0	0	0	0	385	0	1,310	0	0					
Oct - YTD	8,370	7,016	40,310	39,259	10,599	13,330	15,537	15,484	3,393	4,136	10,749	15,528	25,616	27,828	3,451	11,368	16,823	13,097	10,255	7,757	18,761	22,781	0					
Nov	0	0	0	0	0	0	0	0	0	0	0	0	0	0	0	0	0	0	105	0	0	0	0					
Nov - YTD	8,370	7,016	40,310	39,259	10,599	13,330	15,537	15,484	3,393	4,136	10,749	15,528	25,616	27,828	3,451	11,368	16,823	13,097	10,360	7,757	18,761	22,781	0					
Dec	0	0	0	0	0	0	0	0	0	0	0	0	0	0	0	0	0	0	505	0	156	0	0					
Dec - YTD	8,370	7,016	40,310	39,259	10,599	13,330	15,537	15,484	3,853	4,136	10,749	15,528	25,616	27,828	4,000	11,368	16,823	13,097	10,865	7,757	18,917	22,781	0					

		2013		2014 YTD	
Activities	200	871	Activities	177	582
Shelter	58,045	Shelter	57,170		
House	7,357	House	7,590		
Inflatable	1,225	Inflatable	1,175		
Donations	0	Carry Over CIP	14,710		
Sale of Assets	0	Sale of Assets	0		
BUR Tube rental	3,269	BUR Tube rental	3,971		
Snowpark	17,903	Snowpark	15,999		
MISC	370	MISC	87		
Interest	0	Cabana #1	3,300		
Total YTD 508	289,440	Total YTD 508	281,583		

**508 - SHELTER
REVENUE COMPARISON
as of August 31, 2014**

	75930 BURCHFIELD		75920 LL NORTH		75950 LL SOUTH		75970 HAWK ISLAND	
	2013	2014	2013	2014	2013	2014	2013	2014
January	2,980	800	275	-	2,700	400	10,775	1,075
Jan - YTD	2,980	800	275	-	2,700	400	10,775	1,075
February	1,230	2,825	-	950	650	2,595	1,250	9,495
Feb - YTD	4,210	3,625	275	950	3,350	2,995	12,025	10,570
March	976	1,550	325	650	1,700	1,350	1,370	2,350
Mar - YTD	5,186	5,175	600	1,600	5,050	4,345	13,395	12,920
April	2,144	1,375	1,000	795	1,720	1,000	1,415	3,250
Apr - YTD	7,330	6,550	1,600	2,395	6,770	5,345	14,810	16,170
May	2,470	3,195	1,300	2,195	1,400	2,550	2,915	3,095
May - YTD	9,800	9,745	2,900	4,590	8,170	7,895	17,725	19,265
June	2,215	3,170	1,595	1,450	1,450	1,740	1,190	1,070
Jun - YTD	12,015	12,915	4,495	6,040	9,620	9,635	18,915	20,335
July	1,350	1,395	1,300	1,475	1,275	595	2,070	1,245
Jul - YTD	13,365	14,310	5,795	7,515	10,895	10,230	20,985	21,580
August	670	1,550	975	625	725	370	1,575	990
Aug - YTD	14,035	15,860	6,770	8,140	11,620	10,600	22,560	22,570
September	370	-	350	-	750	-	570	-
Sept - YTD	14,405	15,860	7,120	8,140	12,370	10,600	23,130	22,570
October	(75)	-	-	-	-	-	75	-
Oct - YTD	14,330	15,860	7,120	8,140	12,370	10,600	23,205	22,570
November	-	-	-	-	-	-	-	-
Nov - YTD	14,330	15,860	7,120	8,140	12,370	10,600	23,205	22,570
December	-	-	-	-	-	-	-	-
Dec - YTD	14,330	15,860	7,120	8,140	12,370	10,600	23,205	22,570

2013 YTD 54,985

2014 YTD 57,170

Deer Exclosure & Adjacent Plot - Inventory Summary Lake Lansing Park – North Ingham County Parks August 2014

General Study Information

- Exclosures and adjacent plots each measure 15' x 30'
- This is a full inventory of all seedlings within (not sample data, no standard error to be measured)
- All seedlings are measured by height to live top in inches
- Exclosures and adjacent plots #2 and #3 were included in 2014 spring prescribed burn areas giving a perspective on all seedling growth since the burn without significant influence from previous years
- Average alone can be misleading. Standard Deviation (STDEV) measures the amount of variation from the average. A low standard deviation indicates that the heights measured in a particular area tend to be close to the average, a high standard deviation indicates there is a large range of values in the heights measured. For our purposes it will indicate when large and small seedlings were measured but were not necessarily expressed by the average. If you add and subtract the standard deviation to/from the average it gives you an idea of what is 'normal' in the distribution of heights within that data set.

Exclosure 1	13 seedlings
AVERAGE (in)	7.77
MEDIAN	2.00
MODE	2.00
STDEV	9.04
Browsed (Y/N)	N

Adjacent Plot 1	6 seedlings
AVERAGE (in)	1.83
MEDIAN	1.75
MODE	1.50
STDEV	0.41
Browsed (Y/N)	N

- Study area 1 is fully shaded from a well developed canopy and was not included in 2012 or 2014 prescribed burns
- Average and STDEV indicate that much larger seedlings persist in the exclosure
- Adjacent plot 1 had all 1st year seedlings, meaning mortality was 100% over the last year, no evidence of browse on new year growth, 1st year seedlings would not have been available winter and spring of 2014 when most seedlings are browsed

Exclosure 2	128 seedlings/resprouts
AVERAGE (in)	4.16
MEDIAN	2.00
MODE	1.50
STDEV	6.89
Browsed (Y/N)	N

Adjacent Plot 2	59 seedlings/resprouts
AVERAGE (in)	2.85
MEDIAN	2.00
MODE	2.00
STDEV	1.73
Browsed (Y/N)	Y

- Study area 2 is partially shaded by the canopy and was included in 2012 and 2014 prescribed burns
- Average and STDEV indicate that larger seedlings persist in the exclosure
- Adjacent plot 2 has less than half the number of seedlings compared to the exclosure area
- Evidence of significant browse within the adjacent plot

Exclosure 3	48 seedlings/resprouts
AVERAGE (in)	2.61
MEDIAN	2.00
MODE	2.00
STDEV	2.62
Browsed (Y/N)	N

Adjacent Plot 3	35 seedlings/resprouts
AVERAGE (in)	1.91
MEDIAN	2.00
MODE	2.00
STDEV	0.67
Browsed (Y/N)	Y

- Study area 3 is nearly fully shaded by a well developed canopy and was included in 2012 and 2014 prescribed burns
- Average and STDEV indicate that larger seedlings persist in the exclosure
- Evidence of significant browse within the adjacent plot

Exclosure 4	51 seedlings
AVERAGE (in)	12.94
MEDIAN	11.50
MODE	9.50
STDEV	5.79
Browsed (Y/N)	N

Adjacent Plot 4	55 seedlings
AVERAGE (in)	8.90
MEDIAN	8.00
MODE	8.00
STDEV	4.90
Browsed (Y/N)	Y

- Study area 4 is partially shaded by the canopy, light conditions are the most favorable in this area. Not included in 2012 or 2014 prescribed burns
- Average and STDEV indicate that larger seedlings persist in the exclosure
- Evidence of significant browse within the adjacent plot
- Exclosure area holds a significant amount of growth by herbaceous species, adding competition to tree seedlings within but contributing to diversity and available forage within the park (if it was not in an exclosure and deer pressure was low enough for these species to thrive)
- Browsing pressure on seedlings contributes to mortality more slowly here because light conditions are much better, but seedlings experience zero net growth due to overbrowsing

Kingdom Life Church**Coye L. Bouyer, Senior Pastor**

4303 S. Martin Luther King, Jr. Blvd. Lansing, MI 48910

517-882-4660

www.klfechurch.org

August 29, 2014

On behalf of Kingdom Life Church, I would like to extend my sincere appreciation for such a generous donation toward our 3rd Annual Community Block Party held Saturday, August 2. The overall success of this event could not have been made possible if it weren't for generous contributors. Kingdom Life Church continues to seek opportunities to invest in the greater Lansing area by serving the residents, while having a direct impact on the Lansing community.

Your contribution and partnership was demonstrated through this year's event. Thank you for investing in the Lansing community and being a blessing to those who attended. We look forward to working with you in the future.

Sincerely,

Pastor Coye L. Bouyer



COMMUNITY MENTAL HEALTH AUTHORITY
CLINTON • EATON • INGHAM
Adult Mental Health Services (AMHS)
812 E. Jolly Road, Suite 215, Lansing, MI 48910

August 29, 2014

Hawk Island Park
Attn: Brian Collins, Park Manager
1601 E. Cavanaugh St.
Lansing, MI 48910

Dear Mr. Brian Collins:

We would like to thank you for the generous donation of the "Red Tail Shelter", a value of \$250.00, for our Adult Mental Health Services (AMHS) Annual Consumer Picnic that was held on Friday, August 8, 2014. Our picnic was a huge success. More than 75 people who receive services at CMH and their friends and family attended. You are truly making a difference in people's lives.

Thank you on behalf of the staff and consumers of Clinton-Eaton-Ingham Community Mental Health Adult Mental Health Services, for your generosity.

Respectfully,

Clinton-Eaton-Ingham Counties Community Mental Health
Adult Mental Health Service
Customer Service
Mental Health Workers
Peer Support Specialists